



# AW-GEV Web Smart Series

VivoCam Web Smart Managed PoE Switch



## Network Topology View · Web Smart Managed Gigabit PoE Switch

The AW-GEV Web Smart series is a VivoCam web smart managed PoE switch, combining powerful web smart managed features with graphic view functions, providing better functionality and usability. With single AW-GEV Web Smart series allows users to find all network devices and deploy a network system automatically. The AW-GEV Web Smart series also provides high performance HW and environmental flexibility for SMBs and Enterprises. In addition, embedded surveillance features Graphic Views, such as Topology View/Floor View/Map View for managing, controlling and

understanding network structure and device status, as well as Google Map integration to view system status for outdoor applications. The device status and traffic monitoring functions also help users clarify and troubleshoot any connection or device issues. The AW-GEV Web Smart series is ideal for delivering management simplicity, better user experience, and lowering total cost of ownership.

## Key Features

### Managing IP Surveillance

- The Root VivoCam will Auto-Sync with All Sub VivoCam Switches
- Auto Discovery and Classification of Network Devices
- Batch Camera Configuration-File Import & Export
- Batch Camera Network/Login Configuration
- Auto Generated Surveillance Topology View
- Easy Tag VLAN Configuration in Topology View
- Smart Device-Management in Topology View
- PoE On/Off Control in Topology View
- Display IP Camera Live Stream in Topology View, Floor View and Google Map View

### Web Smart Managed PoE Switch

- DHCP Server & Client & Relay & Snooping
- Tag-Based VLAN, Port-Based VLAN, Protocol -Based VLAN, IP Subnet-Based VLAN, MAC-Based VLAN
- Private VLAN Edge (PVE), Voice VLAN, Q-in-Q VLAN, GARP VLAN
- Multicast VLAN Registration (MVR)
- 802.1d (STP), 802.1w (RSTP) and 802.1s (MSTP) & Loop Protection
- LACP IEEE 802.3ad and Static Link Aggregation
- IGMP Snooping v1/v2/v3 & Querier & Proxy
- IEEE 802.1X RADIUS Authentication & IGMP-RADIUS based
- SNMP v1/v2c/v3 User-Based Security Model (USM)
- IEEE802.3az Energy-Efficient Ethernet
- MAC Address Auto-Learning and Auto-Aging

# Feature Highlight

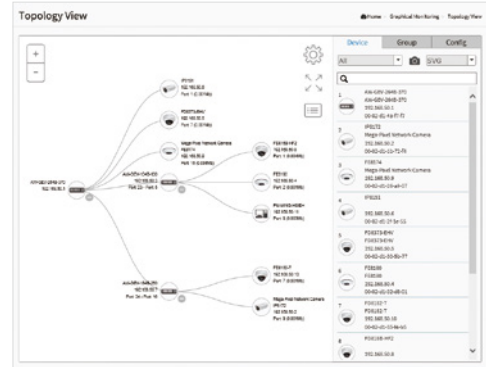
## Auto Discovery

The AW-GEV Web Smart series can automatically discover VIVOTEK's devices such as network cameras, video servers and NVR's with a simple click of the mouse.

| Remove                   | Status | Device Type | Model Name     | Device Name               | MAC               | IP Address     |
|--------------------------|--------|-------------|----------------|---------------------------|-------------------|----------------|
| <input type="checkbox"/> | Online | IP Cam      | VIVOTEK-FD8166 | Mega-Pixel Network Camera | 00-02-01-25-2A-02 | 192.168.48.173 |
| <input type="checkbox"/> | Online | IP Cam      | VIVOTEK-FR220H | Mega-Pixel Network Camera | 00-02-01-25-23-E7 | 192.168.48.120 |
| <input type="checkbox"/> | Online | IP Cam      | VIVOTEK-FR127P | Mega-Pixel Network Camera | 00-02-01-25-42-CA | 192.168.48.130 |
| <input type="checkbox"/> | Online | IP Cam      | VIVOTEK-FD8136 | Mega-Pixel Network Camera | 00-02-01-25-4A-13 | 192.168.48.89  |
| <input type="checkbox"/> | Online | IP Cam      | VIVOTEK-FR372  | Mega-Pixel Network Camera | 00-02-01-25-42-F1 | 192.168.48.79  |
| <input type="checkbox"/> | Online | IP Cam      | VIVOTEK-FR373  | Mega-Pixel Network Camera | 00-02-01-25-5A-04 | 192.168.48.137 |
| <input type="checkbox"/> | Online | IP Cam      | VIVOTEK-FR331H | FR331H-C                  | 00-02-01-25-6A-05 | 192.168.48.234 |
| <input type="checkbox"/> | Online | IP Cam      | VIVOTEK-FR126H | Mega-Pixel Network Camera | 00-02-01-26-61-68 | 192.168.48.133 |
| <input type="checkbox"/> | Online | IP Cam      | VIVOTEK-FR121H | Mega-Pixel Network Camera | 00-02-01-26-67-05 | 192.168.48.24  |
| <input type="checkbox"/> | Online | IP Cam      | VIVOTEK-FR331H | Mega-Pixel Network Camera | 00-02-01-26-A3-06 | 192.168.48.287 |

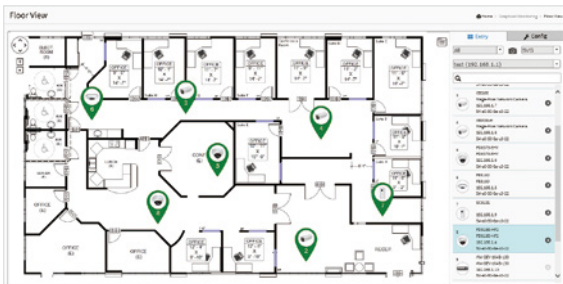
## Topology View

Auto-generated Topology View allows administrators to quickly view and export a complete network topology in SVG/PNG/PDF format for easier inspection and planning.



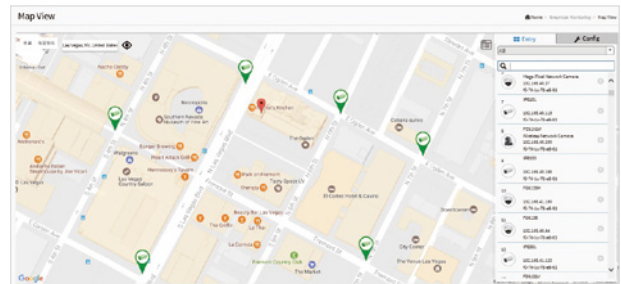
## Floor View

Upload custom floor images. Floor View allows for quick locations of deployed surveillance devices and for export of this view in SVG/PNG/PDF format for easier inspection and planning.



## Google Map View

Locate surveillance devices on Google map to simplify multi-site management of any large scale deployments.



## Device Management

Easy network configuration, open camera Web UI, diagnose camera connection and cable status, display camera live stream, change camera network setting, restore default, PoE consumption, and PoE on/off control.

**Device Management Panel:**

- Device Type: VIVOTEK IP Cameras
- Device Name: FD8373-EHV
- Model Name: FD8373-EHV
- Mac Address: 00-02-01-30-0b-77
- IP Address: 192.168.19.4
- Http Port: 80
- PoE Load: 4.3 W
- Timeline View: 01/24
- Actions: Live Stream, Management, Diagnostics, PoE, PoE on/off, PoE consumption

## Device Status

Device Status page to show the real-time verification result of each connection between switch port and surveillance device.

| Select                              | Status | Model Name | Device Name               | MAC               | IP Address  | Version |
|-------------------------------------|--------|------------|---------------------------|-------------------|-------------|---------|
| <input checked="" type="checkbox"/> | Online | IB8168     | Mega-Pixel Network Camera | 00-02-01-2D-45-0F | 192.168.1.7 | 0100e   |

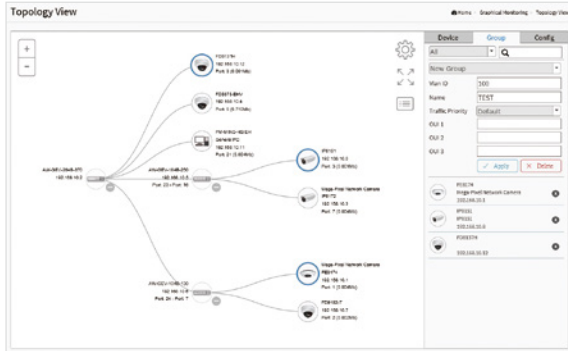
**Connection Details:**

- 192.168.1.17 00-40-c7-1c-a2-07: Connection: ● Cable status: ●
- 192.168.1.7 00-02-01-2d-45-0f: ●

# Feature Highlight

## VLAN Setting

Hierarchical topology view allows administrators to easily build a VLAN.

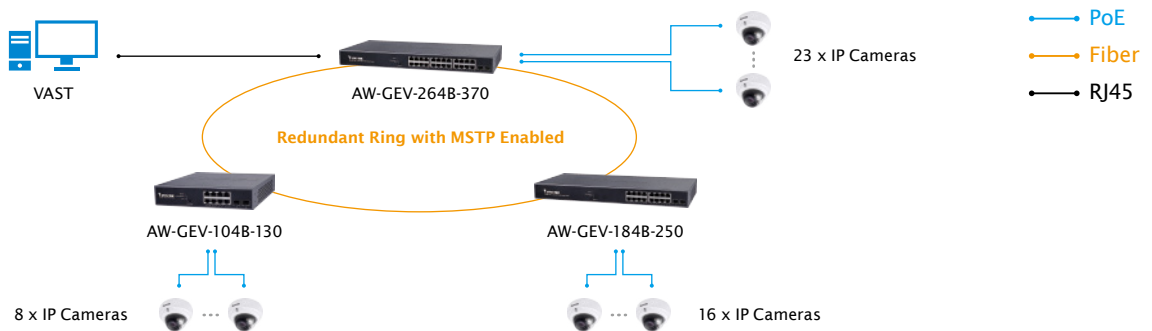
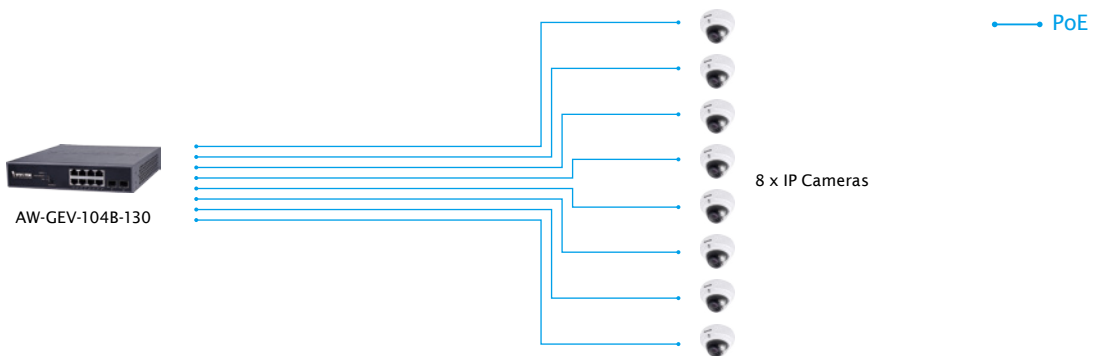


## Live Streaming

Display camera live streaming in Topology View, Floor View and Google Map View.



# Application



# Ordering Information

| Model Name                    | Product Description  |
|-------------------------------|--|
| <b>Web Smart PoE Switch</b>   |  |
| AW-GEV-104B-130               | 8xGE PoE + 2xGE SFP VivoCam Web Smart Managed Switch, PoE Power Budget 130W  |
| AW-GEV-184B-250               | 16xGE PoE + 2xGE SFP VivoCam Web Smart Managed Switch, PoE Power Budget 250W |
| AW-GEV-264B-370               | 24xGE PoE + 2xGE SFP VivoCam Web Smart Managed Switch, PoE Power Budget 370W |
| <b>SFP Transceiver</b>        |  |
| SFP-1000-MM85-X5              | 1.25G, MMF, 0.5km  |
| SFP-1000-MM13-02              | 1.25G, MMF, 2km  |
| SFP-1000-SM13-10              | 1.25G, SMF, 10km   |
| SFP-1000-SM13-40              | 1.25G, SMF, 40km   |
| SFP-1000-CPTX-X1              | 1G SFP to RJ45   |
| <b>IP Surveillance Device</b> |  |
| Network Camera                | VIVOTEK Network Cameras  |
| Video Server                  | VIVOTEK Video Servers  |
| NVR                           | VIVOTEK NVRs   |
| CMS                           | VAST   |

## Front View

**AW-GEV-104B-130**

- 1 LED Indicators
- 2 Mode Selector & Reset Button
- 3 PoE RJ45 Gigabit Ethernet Port x8
- 4 Gigabit SFP Port x2

**AW-GEV-184B-250**

- 1 LED Indicators
- 2 Mode Selector & Reset Button
- 3 PoE RJ45 Gigabit Ethernet Port x16
- 4 Gigabit SFP Port x2

**AW-GEV-264B-370**

- 1 LED Indicators
- 2 Mode Selector & Reset Button
- 3 PoE RJ45 Gigabit Ethernet Port x24
- 4 Gigabit SFP Port x2

## Technical Specifications

| Model  | AW-GEV-104B-130  | AW-GEV-184B-250   | AW-GEV-264B-370   |   |
|--|--|---|---|---|
| Product Description  | 8xGE PoE + 2xGE SFP<br>VivoCam Web<br>Smart Managed PoE Switch | 16xGE PoE + 2xGE SFP<br>VivoCam Web<br>Smart Managed PoE Switch | 24xGE PoE + 2xGE SFP<br>VivoCam Web<br>Smart Managed PoE Switch |   |
| <b>Port Configuration</b>                                    |  |   |   |   |
| 10M/100M/1G RJ45 Port  | 8  | 16  | 24  |   |
| 100M/1G SFP Port   | 2  | 2   | 2   |   |
| Total Ports  | 10   | 18  | 26  |   |
| <b>HW Performance</b>  |  |   |   |   |
| Switching Bandwidth  | 20Gbps   | 36Gbps  | 52Gbps  |   |
| Buffer Memory  | 4.1Mb  | 4.1Mb   | 4.1Mb   |   |
| MAC Address  | 8K   | 8K  | 8K  |   |
| Jumbo Frames   | 10000 Bytes  | 10000 Bytes   | 10000 Bytes   |   |
| <b>Managing IP Surveillance Functions</b>                    |  |   |   |   |
| <b>Management</b>  |  |   |   |   |
| Auto Search VIVOTEK Device                                   | up to 256 pcs  | up to 256 pcs   | up to 256 pcs   |   |
| Surveillance Device Management List                          | √  | √   | √   |   |
| DHCP Server Function   | √  | √   | √   |   |
| VIVOTEK Device Account/Password Setting                      | √  | √   | √   |   |
| VIVOTEK Device Static IP Setting                             | √  | √   | √   |   |
| VIVOTEK Device Grouping Setting for VLAN                     | √  | √   | √   |   |
| VIVOTEK Device Name Edit                                     | √  | √   | √   |   |
| VIVOTEK Camera/Video Server Reboot/Restore Default           | √  | √   | √   |   |
| VIVOTEK Device Re-direct Link                                | √  | √   | √   |   |
| VIVOTEK Device On/Off Line Status                            | √  | √   | √   |   |
| <b>E-Map View</b>  |  |   |   |   |
| Topology View  | √  | √   | √   |   |
| Floor View   | √  | √   | √   |   |
| Google Map View  | √  | √   | √   |   |
| <b>Maintenance</b>   |  |   |   |   |
| VIVOTEK Camera/Video Server Configuration File Export/Import | √  | √   | √   |   |
| VIVOTEK Cameras/Video Server Configuration File Management   | √  | √   | √   |   |
| Floor Image Management                                       | √  | √   | √   |   |
| Export Surveillance Management Device List                   | √  | √   | √   |   |
| Security   | √  | √   | √   |   |
| Trouble Shooting   | √  | √   | √   |   |
| Traffic Monitoring   | √  | √   | √   |   |
| <b>Web Smart Managed Functions</b>                           |  |   |   |   |
| Spanning Tree  | IEEE802.1D (STP)   | √   | √   | √ |
|  | IEEE802.1w (RSTP)  | √   | √   | √ |
|  | IEEE802.1s (MSTP)  | √   | √   | √ |
| Trunking   | IEEE802.1d (LACP)  | √   | √   | √ |
|  | Static Aggregation   | √   | √   | √ |

## Technical Specifications

| Model  |                                      | AW-GEV-104B-130  | AW-GEV-184B-250   | AW-GEV-264B-370   |
|--|--------------------------------------|--|---|---|
| Product Description                          |                                      | 8xGE PoE + 2xGE SFP<br>VivoCam Web<br>Smart Managed PoE Switch | 16xGE PoE + 2xGE SFP<br>VivoCam Web<br>Smart Managed PoE Switch | 24xGE PoE + 2xGE SFP<br>VivoCam Web<br>Smart Managed PoE Switch |
| VLAN   | 802.1Q Tag-based VLAN                | 4096 VLAN IDs  | 4096 VLAN IDs   | 4096 VLAN IDs   |
|  | Port-based VLAN                      | ✓  | ✓   | ✓   |
|  | Private VLAN Edge (PVE)              | ✓  | ✓   | ✓   |
|  | GARP VLAN                            | ✓  | ✓   | ✓   |
|  | Q-in-Q (Double Tag)                  | ✓  | ✓   | ✓   |
|  | Protocol-based VLAN                  | ✓  | ✓   | ✓   |
|  | MAC-based VLAN                       | ✓  | ✓   | ✓   |
|  | Voice VLAN                           | ✓  | ✓   | ✓   |
|  | IP Subnet-based VLAN                 | ✓  | ✓   | ✓   |
|  | Multicast VLAN<br>Registration (MVR) | ✓  | ✓   | ✓   |
| IGMP Snooping (v1/v2/v3)                     | ✓                                    | ✓  | ✓   |   |
| DHCP Relay                                   | ✓                                    | ✓  | ✓   |   |
| MLD v1/v2 Snooping                           | ✓                                    | ✓  | ✓   |   |
| <b>QoS Functions</b>                         |                                      |  |   |   |
| Hardware Queues                              |                                      | 8  | 8   | 8   |
| Classification                               | Port Based                           | ✓  | ✓   | ✓   |
|  | 802.1p                               | ✓  | ✓   | ✓   |
| Rate Limiting                                | Ingress                              | ✓  | ✓   | ✓   |
|  | Egress                               | ✓  | ✓   | ✓   |
|  | Per Port                             | ✓  | ✓   | ✓   |
| Priority Queue Scheduling                    | WRR                                  | ✓  | ✓   | ✓   |
|  | DSCP & Class of Service              | ✓  | ✓   | ✓   |
| <b>Security</b>                              |                                      |  |   |   |
| IEEE802.1x                                   | RADIUS Authentication                | ✓  | ✓   | ✓   |
|  | IGMP-RADIUS Based                    | ✓  | ✓   | ✓   |
| Secure Sockets Layer (SSL)                   | ✓                                    | ✓  | ✓   |   |
| Port Security                                | ✓                                    | ✓  | ✓   |   |
| IP Source Guard                              | ✓                                    | ✓  | ✓   |   |
| Storm Control                                | ✓                                    | ✓  | ✓   |   |
| Layer 2 Isolation Private<br>VLAN Edge (PVE) | ✓                                    | ✓  | ✓   |   |
| RADIUS/TACACS+                               | ✓                                    | ✓  | ✓   |   |
| Loop Detection                               | ✓                                    | ✓  | ✓   |   |
| DHCP Snooping                                | ✓                                    | ✓  | ✓   |   |
| <b>Management</b>                            |                                      |  |   |   |
| SNMP (v1, v2c, v3)                           | ✓                                    | ✓  | ✓   |   |
| RMON (1,2,3 & 9 groups)                      | ✓                                    | ✓  | ✓   |   |
| DHCP Server & Client                         | ✓                                    | ✓  | ✓   |   |
| Port Mirroring                               | ✓                                    | ✓  | ✓   |   |
| UPnP   | ✓                                    | ✓  | ✓   |   |
| LLDP (IEEE802.1ab)                           | ✓                                    | ✓  | ✓   |   |
| LLDP-MED                                     | ✓                                    | ✓  | ✓   |   |
| S-Flow                                       | ✓                                    | ✓  | ✓   |   |
| Firmware Upgrade                             | ✓                                    | ✓  | ✓   |   |
| NTP  | ✓                                    | ✓  | ✓   |   |
| <b>PoE Management</b>                        |                                      |  |   |   |
| PoE On/Off Control                           | ✓                                    | ✓  | ✓   |   |
| PoE Alive Checking for PD                    | ✓                                    | ✓  | ✓   |   |
| PoE Scheduling                               | ✓                                    | ✓  | ✓   |   |

## Technical Specifications

|  |  |   |   |
|--|--|---|---|
| Model                                  | AW-GEV-104B-130  | AW-GEV-184B-250   | AW-GEV-264B-370   |
| Product Description                    | 8xGE PoE + 2xGE SFP<br>VivoCam Web<br>Smart Managed PoE Switch | 16xGE PoE + 2xGE SFP<br>VivoCam Web<br>Smart Managed PoE Switch | 24xGE PoE + 2xGE SFP<br>VivoCam Web<br>Smart Managed PoE Switch |
| Power Delay                            | V  | V   | V   |
| <b>PoE Functions</b>                   |  |   |   |
| IEEE 802.3af/at PoE Standard Compliant | V  | V   | V   |
| Number of PoE Output Port              | 8  | 16  | 24  |
| PoE output Power                       | Per Port 54VDC, Max. 30W                                       | Per Port 54VDC, Max. 30W  | Per Port 54VDC, Max. 30W  |
| Total PoE Power Budget                 | 130W   | 250W  | 370W  |
| PoE Pin Assignment                     | 1/2(+), 3/6(-)   | 1/2(+), 3/6(-)  | 1/2(+), 3/6(-)  |
| Surge Protection                       | Per PoE Port 6KV   | Per PoE Port 6KV  | Per PoE Port 6KV  |
| <b>Environmental Specifications</b>    |  |   |   |
| Operating Temperature                  | 0°C ~ 50°C (32°F ~ 122°F)                                      | 0°C ~ 50°C (32°F ~ 122°F)                                       | 0°C ~ 50°C (32°F ~ 122°F)                                       |
| Storage Temperature                    | -20°C ~ 70°C (-4°F ~ 158°F)                                    | -20°C ~ 70°C (-4°F ~ 158°F)                                     | -20°C ~ 70°C (-4°F ~ 158°F)                                     |
| Operating Humidity                     | 10 ~ 90% RH  | 10 ~ 90% RH   | 10 ~ 90% RH   |
| <b>Mechanical Specifications</b>       |  |   |   |
| Dimensions                             | 220 (W) x 44 (H) x 242 (D)<br>mm                               | 442 (W) x 44 (H) x 211(D)<br>mm                                 | 442 (W) x 44 (H) x 211(D)<br>mm                                 |
| Weight                                 | 1.95 kg  | 3 kg  | 3.1 kg  |
| <b>Power Source</b>                    |  |   |   |
| AC Input                               | 100V ~ 240V  | 100V ~ 240V   | 100V ~ 240V   |
| Frequency                              | 50 ~ 60 Hz   | 50 ~ 60 Hz  | 50 ~ 60 Hz  |
| Power Consumption                      | 150W   | 280W  | 430W  |
| <b>General</b>                         |  |   |   |
| Warranty                               | 24 months  | 24 months   | 24 months   |
| <b>Certifications</b>                  |  |   |   |
| Certifications                         | CE, FCC, LVD, VCCI, C-Tick                                     | CE, FCC, LVD, VCCI, C-Tick                                      | CE, FCC, LVD, VCCI, C-Tick                                      |
| <b>Accessories</b>                     |  |   |   |
| Included Accessories                   | Power Cord, QIG, CD<br>Manual, Rack Mount Kit                  | Power Cord, QIG, CD<br>Manual, Rack Mount Kit                   | Power Cord, QIG, CD<br>Manual, Rack Mount Kit                   |

### Dimensions

