



FaceMe® SECURITY

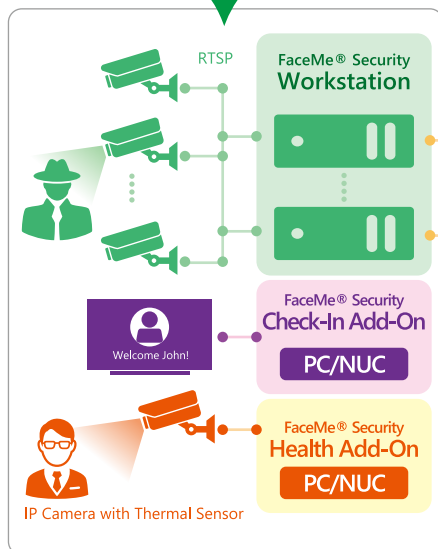
Enabling Facial Recognition for Smart Surveillance

Designed for smart surveillance, FaceMe® Security is a value-added software that runs on workstations, servers and VMS (video management systems). It can detect individual faces within a crowd, match them with a database profile and send real-time alerts to security personnel.

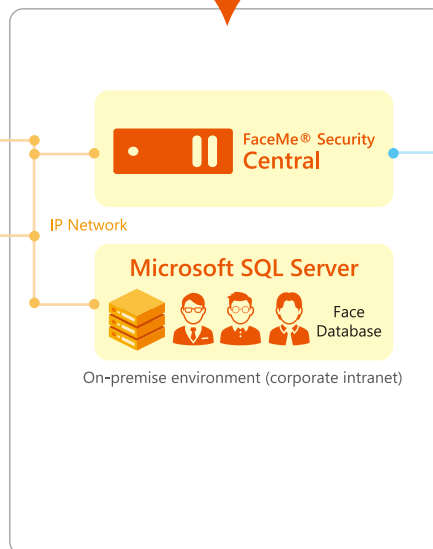
How Does It Work?

FaceMe® Security provides a complete end-to-end surveillance solution. On the edge-side installation, FaceMe® Security Workstation runs on workstations, IPCs and IoT devices equipped with NVIDIA GPU, Intel® CPU/VPU and Jeston for real-time face detection, identity verification and facial feature extraction. The FaceMe® Security Health Add-on checks mask wearing compliance and body temperature. FaceMe® Security Central is located at servers in on-premise environment, which provides a web-based console to manage the face database, configure IP cameras, and inform relevant personnel about registered visitors, VIPs, block-listed people, or employees entering each monitored area.

AI Facial Recognition



Management & Console



Instant Notification



FaceMe® Security Integration with VMS

FaceMe® Security supports mainstream VMS (video management systems), including Milestone, Network Optix Nx Witness and VIVOTEK VAST2. The integration gives FaceMe® Security the ability to trigger real-time notifications to these supported VMS systems when events such as the arrival of VIPs, people of interest, and employees, or when a person is not adhering to the mandated health protocols.



FaceMe® Security System Requirements

FaceMe® Security Central/ Workstation

| | Central | Workstation (Windows) | Workstation (Jetson) |
|----------------|--|---|---|
| CPU | Intel® Core™ i5, Xeon E5 series | Intel® Core™ i7, U series or above | Nvidia Jetson Xavier NV Nvidia Jetson AGX Xavier |
| GPU (Optional) | — | Nvidia Quadro RTX 5000, Nvidia Tesla T4, Nvidia RTX 1660 Ti (6GB) | |
| VPU (Optional) | — | 2x Movidius Myriad X VPU | — |
| Memory | 16 GB | 16 GB | 16 GB |
| Database | Microsoft SQL Server 2017/2019 | — | |
| OS | Windows 10 Pro, Windows Server 2019 or Windows 10 Enterprise LTSC | | Ubuntu 18.04 LTS 64-bit |

FaceMe® Security Check-In Add-On



| | |
|--------------------|---|
| CPU | Intel® Celeron® G4920 or above |
| Memory | 16 GB |
| Operating System | Windows 10 / Windows 10 Pro / Windows Enterprise |
| Network Connection | Required for connecting to FaceMe Security Central (intranet) |

FaceMe® Security Health Add-On



| | |
|-----------------------|---|
| CPU | Intel® Core™ i7 (8th generation) or above |
| Memory | 16 GB |
| GPU (Optional) | Nvidia RTX 2060 or above (Optional, for enhanced performance) |
| Hard Disk Space | 8 GB free disk space |
| Thermal IP Camera | Advantech: UCAM-220TB, UCAM-220TT (6mm 或 3mm) Hikvision: DS-2TD2617B-6/PA, DS-2TD2617B-3/PA, DS-2TD1217B-3/PA, DS-2TD1217B-6/PA |
| Operating System (OS) | Windows 10 / Windows 10 Pro / Windows Enterprise |
| Network Connection | Required for connecting to FaceMe® Security Central (intranet) |



For more information:

Visit: <https://tw.cyberlink.com/faceme/security>

Or Contact:

USA, Canada & Latin America: FaceMe_US@cyberlink.com

Japan: FaceMe_JP@cyberlink.com

Taiwan, Asia Pacific & ANZ: FaceMe_TW@cyberlink.com

Korea: FaceMe_KR@cyberlink.com

EMEA: FaceMe_EU@cyberlink.com

