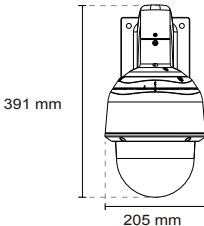
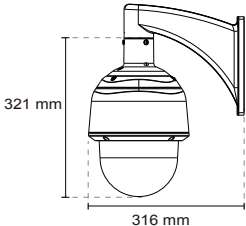



Technical Specifications	
Models	SD8363E SD8363E-M (electronic dehumidifier)
System Information	
CPU	Multimedia SoC (System-on-Chip)
Flash	128 MB
RAM	256 MB
Camera Features	
Image Sensor	1/3" Progressive CMOS
Maximum Resolution	1920x1080
Lens Type	20x optical zoom, auto focus
Focal Length	f = 4.7 ~ 94 mm
Aperture	F1.6 (wide) ~ F3.5 (tele)
Auto-iris	DC-iris
Field of View	3° ~ 55° (horizontal) 2° ~ 32° (vertical) 3° ~ 64° (diagonal)
Shutter Time	1/1 sec. to 1/10,000 sec.
WDR Technology	WDR Pro
Day/Night	Removable IR-cut filter for day & night function
Minimum Illumination	0.02 Lux @ F1.6, 50 IRE (Color) 0.001 Lux @ F1.6, 50 IRE (B/W)
Pan Speed	0.05° ~ 450° / sec.
Pan Range	360 endless
Tilt Speed	0.05° ~ 450° / sec.
Tilt Range	220° (-110° ~ +110°)
Preset Locations	256 preset locations, 40 presets per tour
Pan/tilt/zoom	48x digital zoom (4x on IE plug-in, 12x built-in)
Functionalities	Auto pan mode Auto patrol mode
On-board Storage	SD/SDHC/SDXC card slot
Video	
Compression	H.264, MJPEG & MPEG-4
Maximum Frame Rate	H.264: 30 fps @ 1920x1080 60 fps @ 1280x720 MPEG-4: 30 fps @ 1920x1080 60 fps @ 1280x720 MJPEG: 30 fps @ 1920x1080 60 fps @ 1280x720 (Up to 30/15 fps in WDR mode)
Maximum Streams	4 simultaneous streams
S/N Ratio	Above 60 dB
Dynamic Range	108 dB
Video Streaming	Adjustable resolution, quality and bitrate Zoom enhancement for better image quality under limited bandwidth
Image Settings	Adjustable image size, quality and bit rate Time stamp, text overlay, flip & mirror Configurable brightness, contrast, saturation, sharpness, white balance, exposure control, gain, backlight compensation, privacy masks (Up to 24) Scheduled profile settings
Audio	
Audio Capability	Audio input/output (full duplex)
Compression	GSM-AMR, AAC, G.711
Interface	External microphone input External line output
Network	
Users	Live viewing for up to 10 clients
Protocols	IPv4, IPv6, TCP/IP, HTTP, HTTPS, UPnP, RTSP/RTP/RTCP, IGMP, SMTP, FTP, DHCP, NTP, DNS, DDNS, PPPoE, CoS, QoS, SNMP, 802.1X
Interface	10Base-T/100 BaseTX Ethernet (RJ-45)
ONVIF	Supported, specification available at www.onvif.org
Intelligent Video	
Video Motion Detection	Triple-window video motion detection
Auto-Tracking	Auto-tracking on moving object

Alarm and Event	
Alarm Triggers	Video motion detection, manual trigger, periodical trigger, system boot, recording notification, audio detection
Alarm Events	Event notification using digital output, HTTP, SMTP, FTP and NAS server File upload via HTTP, SMTP, FTP and NAS server
General	
Connectors	RJ-45 cable connector for Network/PoE connection Audio input Audio output AC 24V power input Digital input*4 Digital output*2 RS-485 for PTZ control (PelcoD protocol, Baud rate 2400)
LED Indicator	System power and status indicator
Power Input	PoE plus (IEEE 802.3at compliant) High Power PoE AC 24V
Power Consumption	PoE plus: Max. 19W AC 24V: Max. 48W (heater on) Max. 19W (heater off) High Power PoE: Max. 48W (heater on) Max. 19W (heater off)
Dimensions	Ø: 205 mm x 321 mm
Weight	Net: 3,660 g
Casing	Weather-proof IP66- and NEMA 4X-rated metal housing Built-in electrical dehumidifier device (SD8363E-M)
Safety Certifications	CE, FCC Class A, VCCI, C-Tick, NEMA 4X
Operating Temperature	-5°C ~ 55°C (PoE Plus) -40°C ~ 55°C (AC 24V / High Power PoE)
Warranty	36 months
System Requirements	
Operating System	Microsoft Windows 7/Vista/XP/2000
Web Browser	Mozilla Firefox 7~10 (Streaming only) Internet Explorer 7.x or 8.x VLC: 1.1.11 or above Quicktime: 7 or above
Other Players	
Included Accessories	
CD	User's manual, quick installation guide, Installation Wizard 2, ST7501 32-channel recording software
Others	Wall mount bracket, screws, waterproof connectors, terminal blocks, RJ45 coupler, ethernet cable, quick installation guide, warranty card, alignment sticker, T25 stardriver, seal ring, software CD


Dimensions	
	

Compatible Accessories


Mounting Kits




AM-116
20 cm
pendant pipe




AM-231
Parapet
mounting kit




AM-519
1.5" PT adapter




AM-117
40 cm
pendant pipe



AM-221
Goose neck
mounting kit




AM-118
Indoor
pendant head




AM-103
Recessed kit

PoE Kits




AP3001
PoE plus
injector




AP-331
High power
PoE injector

Power Adapter




AA-341
AC 24V power
adapter


Others



AC-212
Smoked cover



AC-111
Vandal-proof
transparent
cover



AO-001
Combo cable

All specifications are subject to change without notice. Copyright © VIVOTEK INC. All rights reserved.

Distributed by:



VIVOTEK INC.
6F, No.192, Lien-Cheng Rd., Chung-Ho,
New Taipei City, 235, Taiwan, R.O.C.
T: +886-2-82455282 F: +886-2-82455532
E: sales@vivotek.com

VIVOTEK USA
2050 Ringwood Avenue,
San Jose, CA 95131
T: 408-773-8686 F: 408-773-8298
E: salesusa@vivotek.com

VIVOTEK Europe
Randstad 22-133, 1316BW Almere,
The Netherlands
T: +31(0)36-5298-434
E: saleseurope@vivotek.com

Ver 1.4



Speed Dome Network Camera SD8363E/63E-M

1080p Full HD • 20x Zoom • NEMA 4X •
IP66 • Extreme Weatherproof • PoE Plus



VIVOTEK SD8363E is part of the SUPREME series product line offering 1080p Full HD resolution with superb image quality. Adopting a 20x optical zoom lens, the SD8363E is able to capture details at top-notch quality. The IP66- and NEMA 4X-rated housing protects the camera body against rain, dust, and corrosion within a wide temperature range of between -40°C to 55°C. This feature ensures operation under extreme weather conditions and hazardous environments. It is especially suitable for monitoring wide open indoor/outdoor spaces such as airports, highways and parking lots where high-level reliability and precision are always required.

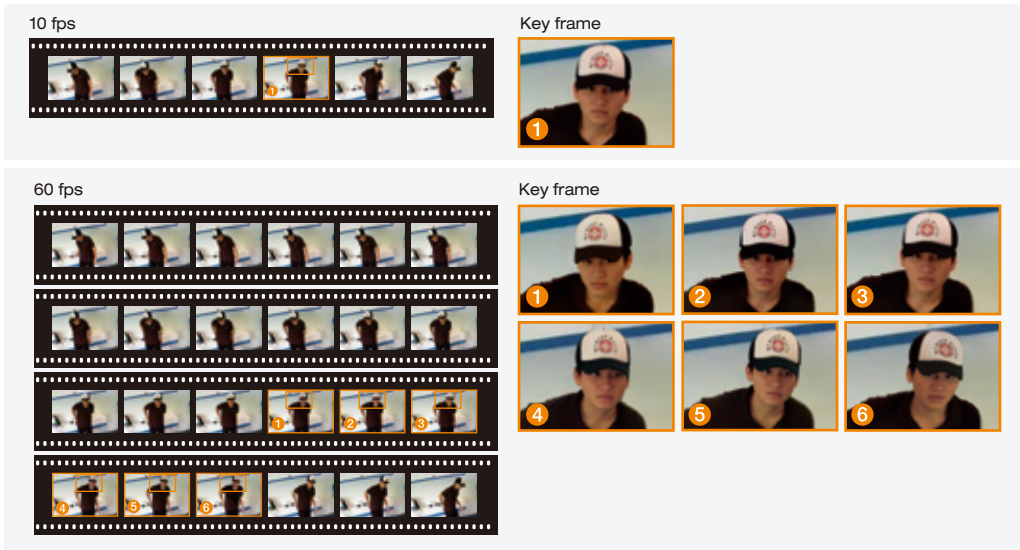
The SD8363E supports high-performance H.264/MPEG-4/MJPEG compression technology and offers extra smooth video quality with resolution up to 30 fps @ 1080p. Boasting WDR Pro technology, the SD8363E can also cope with challenging lighting conditions and generate image quality close to the capabilities of the human eye. With a sophisticated pan/tilt mechanism, the camera provides fast, precise movement with continuous 360-degree pan and 220-degree tilt. Users can also easily control the lens position via a mouse or a joystick to track the object of interest and set up to 256 preset positions. With the built-in auto tracking feature, the SD8363E provides instantaneous reaction to suspicious moving objects in wide area locations before operators are aware of activity.

As with all VIVOTEK true day/night cameras, the SD8363E features a removable IR-cut filter, maintaining clear images 24 hours a day. With audio detection, by recognizing increases or decreases in sound volume, an additional layer of intrusion detection is ensured. Zoom enhancement provides 60x optical zoom at 640x360 resolution by which VGA-level bandwidth is used to obtain image details as high as 1080p resolution. With other advanced features such as SD/SDHC/SDXC card slot, 802.3at compliant PoE Plus and 60 fps high quality video, the SD8363E is the best choice for the most demanding outdoor surveillance applications.

SUPREME

60 fps Raises Recognition Accuracy

The VIVOTEK SD8363E is able to transmit 60 fps @ 720p resolution with H.264 compression, whereas a conventional megapixel camera can generally only achieve 10 to 15 fps due to hardware limitations. 60 fps provides a significant advantage as it enables viewing and recording footage at an exceptional frame rate. This feature provides a more complete record of an event and ensures accurate target identification. The more images or frames that can be captured and delivered to a facial recognition database, the more forensic evidence is available for biometric pairing, significantly increasing the level of accuracy.



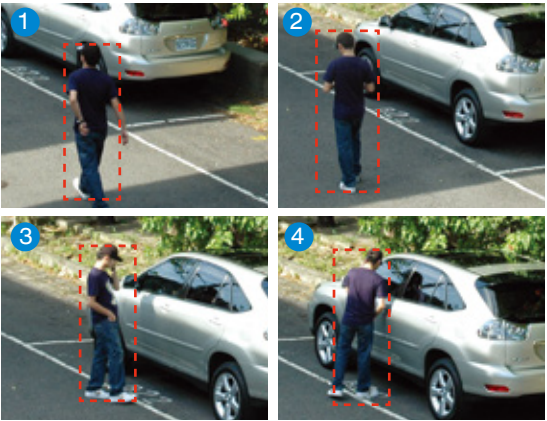
Advanced Mechanism

SD8363E has a pan range of 360° and tilt range of 220°. With the additional 20° tilt range, the SD8363E is able to expand the viewing range to the field above the normal horizontal view. Additionally, the SD8363E is built with QuickPan technology, allowing for 360° end-less panning at a speed of 450° per second. This allows users to quickly direct the camera lens to catch any object of interest in the field of view surrounding the camera.



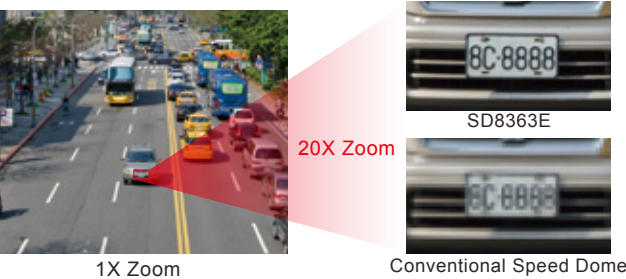
Auto Tracking for Moving Objects

The auto tracking feature provides instantaneous reaction to suspicious moving objects over a wide area before an operator may be aware of activity. Users are able to define the target object size in order to render auto tracking more effectively.



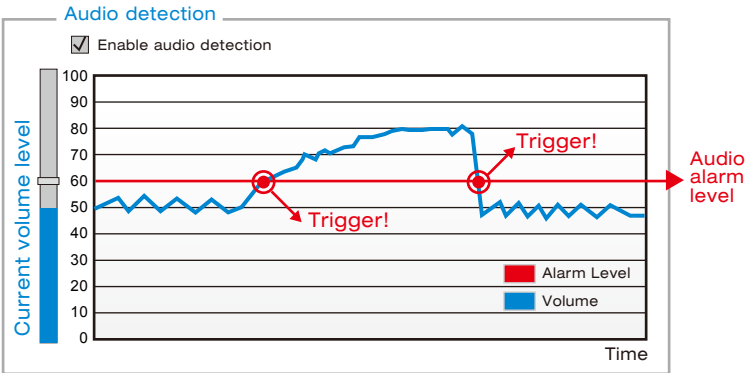
Zoom Enhancement

Utilizing a 20x optical zoom lens, the SD8363E provides close-up images with 1080p detail and effectively extends the user's viewing distance. Even under limited bandwidth environments, users can take advantage of the VIVOTEK Zoom enhancement feature to obtain image detail as high as 1080p resolution using VGA-level bandwidth.



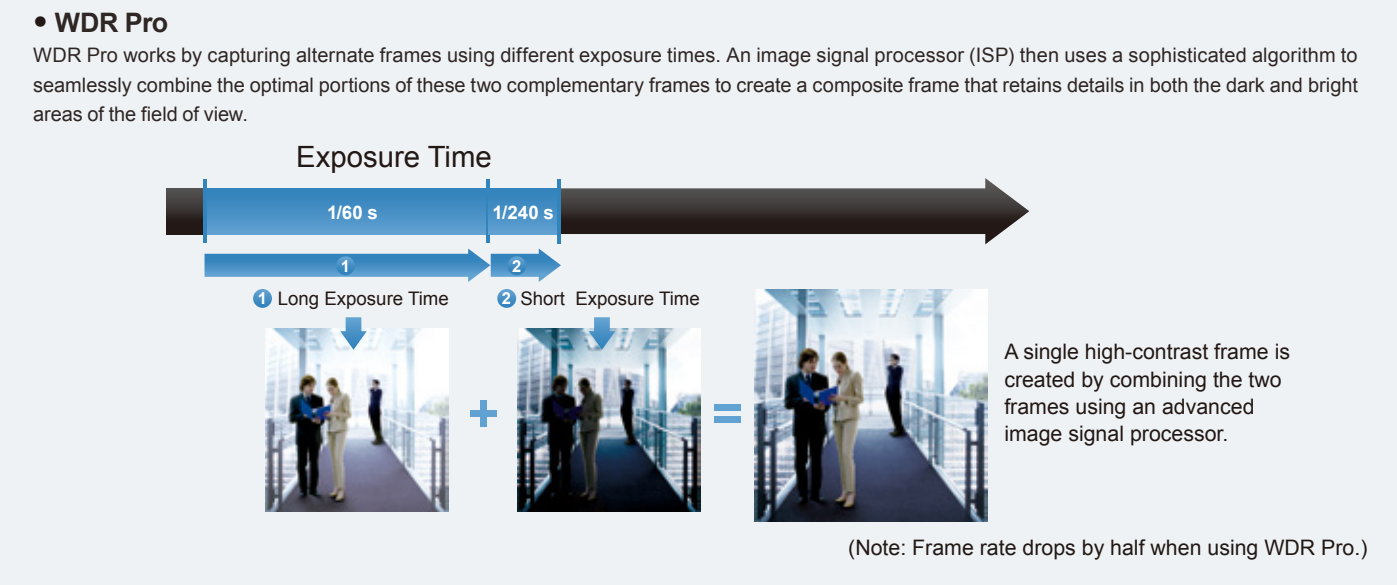
Audio Detection for Instant Alerts

The audio detection feature enables an event trigger when a sudden, unexpected increase or decrease in sound volume occurs so as to alert users of a possible emergency situation.



Unparalleled Visibility in High Contrast Environments

When a camera is used in a high contrast, backlight, glare or light reflective environment, such as a building entrance, ATM or window, an object may appear dark and unrecognizable. WDR (Wide Dynamic Range) technology compensates for the unbalanced lighting, restoring the details throughout the field of view. With this feature, the SD8363E is able to maintain image quality even under challenging light conditions.



Extreme Weatherproof

• Wide Temperature Range

The wide temperature range (-40°C ~ 55°C) enhances the SD8363E's performance and reliability under extremely harsh weather conditions.



• IP66-rated and NEMA 4X Housing

The weather-proof IP66- and NEMA 4X-rated housing protects the SD8363E from rain, dust, and corrosion, allowing the device to operate outdoors under a multitude of weather conditions.



SD8363E/63E-M | Speed Dome Network Camera

- 1080p Full HD SONY CMOS Sensor
- 30 fps @ 1080p Full HD
- 60 fps @ 720p HD
- 20x Zoom Lens
- Removable IR-cut Filter for Day & Night Function
- 360° Continuous Pan and 220° Tilt
- Real-time H.264, MPEG-4 and MJPEG Compression (Triple Codec)
- WDR Pro for Unparalleled Visibility in High Contrast Environments
- Weather-proof IP66-rated and NEMA 4X Housing
- -40°C ~ 55°C Wide Temperature Range for Extreme Weather Conditions
- Audio Detection for Instant Alerts
- Auto Tracking for Moving Objects
- Built-in 802.3at Compliant PoE Plus
- 3D Privacy Masks for Additional Protection
- Built-in SD/SDHC/SDXC Card Slot for On-board Storage

