

ND8321

Standalone Desktop NVR



8-CH · 2-Bay HDD · Auto Setup · Auto Adaptive Stream · Hardware Decoding

VIVOTEK ND8321 is a compact Linux embedded 8-CH standalone desktop NVR designed for any small-scale video surveillance installation. ND8321 achieves non-screwdriver installation, and facilitates "One Button Setup" with its plug & play and auto setup functionality.

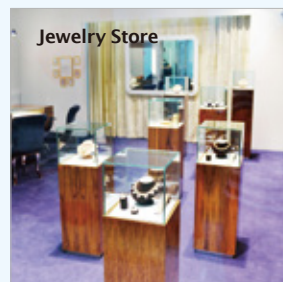
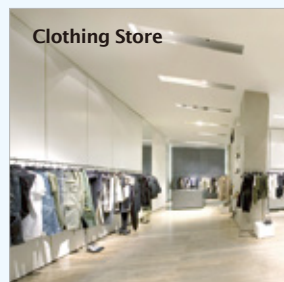
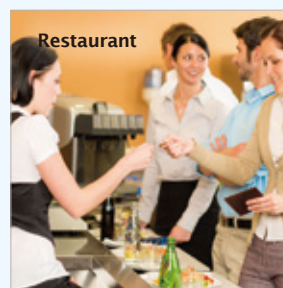
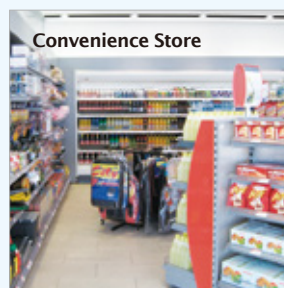
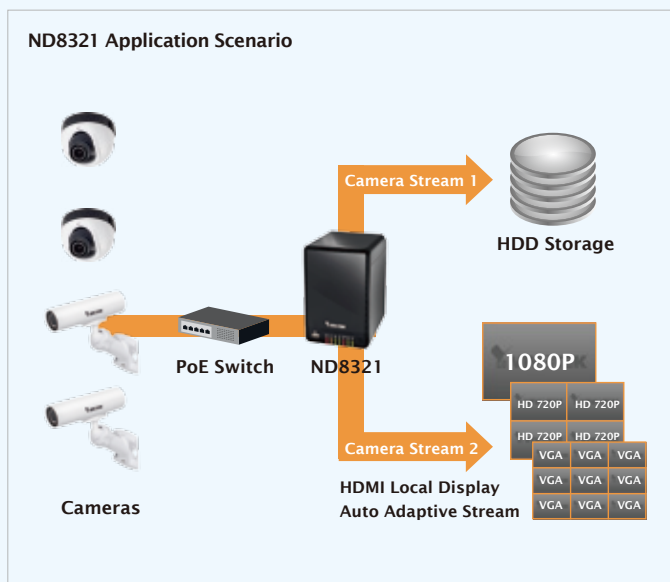
Supporting Full HD HDMI local video output, users can control the GUI OSD interface via mouse & keyboard, eliminating the need for a separate PC to view video or to playback from the NVR. The new local display design - Auto Adaptive Stream will dynamically modify Stream 2 resolution of a camera to best fit the display resolution according to the layout type, performing an efficient display. Fisheye dewarp is also designed in ND8321. ND8321 supports software dewarp of VIVOTEK fisheye cameras, allowing seamless display in a fisheye surveillance scenario.

Together with VAST CMS and ST7501 VMS, users can set up an easy-to-use IP surveillance system with ease. VIVOTEK also provides the mobile application, iViewer, for both iOS and Android handheld devices, enabling users to monitor live video anytime, anywhere.

Key Features

- 8-CH Live Viewing
- 1-CH Local Playback, 4-CH Remote Synchronous Playback
- Embedded Linux OS
- Easy to Install HDD Design
- 1080P HDMI Local Video Output
- Plug & Play Auto Setup
- Auto Adaptive Stream for Efficient Display
- Support Fisheye Dewarp (10, 1P, 1R, 103R)
- Support Local Rewind
- VIVOTEK Camera Configuration Integrated

ND8321 Application Scenario

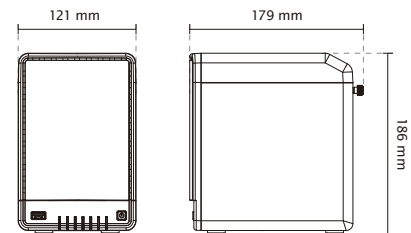


Hardware Information

Model	ND8321	Power	
System		Power Input	DC 12V 5A
OS	Embedded Linux	Power Consumption (W)	Max. 60 W
CPU	ARM Processor	LED Indicator	
Flash	256 MB	LED Indicator	Power, Status, LAN, HDD1, HDD2, Alarm, Record
RAM	1 GB	Mechanic	
Watchdog	Hardware + Software	Form Factor	Tower
Power Restoration	System restart automatically after Power Recovery	Operation Buttons	Power (Front) / Reset (Back)
Storage		Dimensions	121 mm (W) x 179 mm (D) x 186 mm (H)
HDD Devices	Internal tray x 2	Weight	0.92 kg
HDD Max. Capacity	8 TB (4 TB x 2)	Operating Temperature	0 ~ 40 °C
Disk Management	Create, Format and Remove Disk HDD S.M.A.R.T	Humidity	0 ~ 95%
Video		General	
Video Output	HDMI	Safety Certifications	CE, LVD, FCC Class B, VCCI, C-Tick
Resolution	1920x1080	Warranty	24 months
Graphics Decoder	Hardware decoding	System Requirements	
Decoding Capacity	H.264: 1920x1080 @ 30 fps (1-CH) 1280x720 @ 120 fps (4-CH) 640x480 @ 240 fps (8-CH)	Operating System	Microsoft Windows OS: XP/Vista/7/8/2008/2012
Camera Position	Change the view cell position	CPU	Intel Celeron or above
External I/O		Memory	2 GB or above
USB	Front: 1 (USB 2.0) Back: 1 (USB 2.0)	Ethernet	10/100Mbps
Network		Display Resolution	1024 x 768 pixels or above
Protocols	IPv4, TCP/IP, HTTP, HTTPS, UPnP, RTSP/RTP/RTCP, SMTP, FTP, DHCP, NTP, DNS, DDNS, IP Filter	Web Browser	Internet Explorer 10 (32 bit) or above
Interface	1 x 10/100/1000Mbps	Software AP	Installation Wizard 2, ST7501, VAST
Transform Gateway	Supported	Mobile APP, Tablet APP	iViewer (iOS) iViewer (Android)
		Accessories	
		CD	User's Manual, Quick Installation Guide (QIG), Installation Wizard 2, ST7501
		Others	Power Adapter, Power Cord, Quick installation guide, Warranty card, H.D.D. Screws x 4, H.D.D. Brackets x 2, USB Mouse

Software Information

Record		Alarm Management	
Maximum Channel	8	Schedule Type	Continuous, Schedule, Manual
Record throughput	32 Mbps	Event	Motion Detection, PIR Detection, Tampering Detection, Digital Input (Camera), Digital Output (Camera), Connection Abnormal, Storage Abnormal, Storage Full
Network throughput	16 Mbps	Action	Record, Email (Snapshot), FTP, Digital Output (Camera), Buzzer, PTZ Control (Go to Preset)
Audio Format	G.711, G.726, AMR, AAC	Recording Time (sec.)	Pre-Record: 5 (max. 10), Post-Record: 20 (max. 300)
Video Format	MJPEG, H.264 AVC	Backup	
Video Resolution	VGA, 1MP, 2MP All Device & 3MP Fisheye Camera	Manual	USB Dongle (FAT Format)
Recording Time (sec.)	Pre-Record: 5 (max. 10) Post-Record: 20 (max. 300)	System	
Recording Stream	Single	User Management	User Account: 16 User Account Time Limit: 10 mins (Local Display) User Level: Administrator / Regular User User Feature Definition: By Camera
Recording Mode	Continuous, Schedule, Manual, Event, Activity Adaptive Streaming	Log	System, Recording, User, Error
Recording Setting	Recycle (unit: Day)	Date & Time	Time Zone, Manual, Automatic Sync NTP, Daylight Saving Time
Recording Path	Local Path	Firmware	Manual update
Record Video Format	3GP	Restore Default	Supported
LiveView (Local Display)		Backup/Restore (Configuration)	Supported
Stream Application	Auto Adaptive Stream	Language	Czech, English, French, German, Italian, Japanese, Portuguese, Russian, Spanish, Simplified Chinese, Traditional Chinese
LiveView Display	8 Channel Multi Layout display: 1x1, 1x3 (Corridor Format), 2x2, 3x3, 1+5, 1+3, 1+1+3 (1P), 1+3+3 (1P)	Camera Integration	
Monitor Enhancement	OSD Display (NVR), OSD Display (Camera), Camera Information, Remote I/O Control, Event Notification, Aspect Ratio, PiP Control Fisheye Dewarp: 10, 1P, 1R, 103R	Insert Camera	Manual, Search
PTZ Control	Panel Control	Video (Media) Setting	Compression, Resolution, FPS, Video Quality
PTZ Operation	Direction Control, Home, Iris, Preset, Patrol (Group)	Image Setting	Image Display Image Adjustment
Snapshot	JPEG	PTZ Control	Panel Control
Video Clip Export	EXE	PTZ Operation	Direction Control, Home, Preset, Patrol (Group)
Playback (Local Display)		Motion Detection	Supported
Playback Display	1 Channel Layout display: 1x1	Activity Adaptive Stream	Supported
Playback Control	Play, Pause, Rewind, Next / Previous Frame, Speed Control	Device Integration	
Search Mode	Calendar, Event, Timeline, Timeline Scale, Storyboard	UPS	APC Model Compatible
Monitor Enhancement	OSD Display (Camera), Event Notification, Aspect Ratio, PiP Control Fisheye Dewarp: 10, 1P, 1R, 103R	Dimensions	
Snapshot	JPEG		
Video Clip Export	EXE		
LiveView (Remote)			
Stream Application	Stream Selection		
Audio Capability	One Way		
LiveView Display	8 Channel Multi Layout display: 1x1, 2x2, 3x3, 1+3, 1+5		
Monitor Enhancement	OSD Display (NVR), Drag & Drop, Image Freeze, Audio Control, Remote I/O Control, Event Notification, Bookmark, PiP Control Fisheye Dewarp: 10, 1P, 1R		
PTZ Control	Panel Control		
PTZ Operation	Direction Control, Home, Zoom, Focus, Iris, Preset, Patrol (Group)		
Snapshot	JPEG		
Playback (Remote)			
Playback Display	4 Channel Multi Layout display: 1x1, 2x2, 1+3		
Playback Control	Regular (Play, Pause, Stop), Next Frame, Speed Control		
Search Mode	Calendar, Timeline, Timeline Scale, Bookmark		
Monitor Enhancement	OSD Display (NVR), Drag & Drop, Audio Control, PiP Control Fisheye Dewarp: 10, 1P, 1R		
Snapshot	JPEG		
Video Clip Export	EXE, 3GP		



All specifications are subject to change without notice. Copyright © VIVOTEK INC. All rights reserved.

Distributed by:



VIVOTEK INC.
6F, No.192, Lien-Cheng Rd., Chung-Ho,
New Taipei City, 235, Taiwan, R.O.C.
T: +886-2-82455282 F: +886-2-82455532
E: sales@vivotek.com

VIVOTEK USA
2050 Ringwood Avenue,
San Jose, CA 95131
T: 408-773-8686 F: 408-773-8298
E: salesusa@vivotek.com

VIVOTEK Europe
Randstad 22-133, 1316BW Almere,
The Netherlands
T: +31(0)36-5298-434
E: sales europe@vivotek.com

Ver 1.7